



2025 Course Catalog

Short Term Hands-On Training | Industry-Standard Gear | Real-World Experience

Learn the Arts of:

Studio Recording

Live Sound Engineering

Stage & Lighting Design

Mixing & Mastering

Live Streaming

Post-Production

The RecW

Life. Changing. Education.

Produce Music and Live Events at a Professional Level

[455 Massieville Rd. Chillicothe, OH. 45601]

[www.therecw.com] | [office@therecw.com] | [(800) 848-9900]

Course Catalog - Date of Publication- 2025

Educational Overview



Learning to record, mix and produce music at a professional level is the goal of training at The RecW.

The RecW teaches the skills needed to start a career as an audio recording engineer, music producer or live sound engineer. These same skills are also vital for someone who wants to create their own music with full artistic control over how things will sound.

Our training is designed to accommodate students from a wide variety of backgrounds - musician or non-musician, those who already own a project studio or those who have never been in a studio before. The RecW is ready to elevate the goals of anyone with a sincere passion to learn the recording arts.

Our approach is very immersive and hands-on. Students spend more than 7 hours per day, 5 days per week actively learning creative studio skills.

This concentrated approach lets the entire curriculum be completed in less than two months. It is time-tested and proven to be a superior way to prepare new music production professionals.

Since 1977, students from over 70 countries have traveled to our campus to participate in the unique programs we offer.

Our studios are equipped with the latest digital production technologies and the best of "old-school" analog. Our staff has deep expertise in guiding students in the engineering and production of all popular genres of music.

Across the country and around the world, The RecW graduates have worked with many of today's biggest artists. Thousands of our grads are working behind the scenes on movies, television shows and in just about any situation that needs skilled audio professionals

The RecW's programs are expertly designed to cover the wide range of skills and knowledge involved in audio recording and music production.

Digital workstation and analog console operation, microphone selection and placement, tracking session setup and workflow, vocal comp and tuning, drum editing, post-production, mixing, re-mixing, mastering, sound design, restoration - these are just some of the studio skills learned by The RecW students.

Music Recording & Audio Production : CORE Program

Music Recording & Audio Production: ADVANCED Program

Music business practices, live sound reinforcement, DMX stage lighting, multi-camera live streaming concert broadcast, studio acoustics and design - are a few of the broader topics included in the curriculum.

The CORE and ADVANCED Programs both offer extensive practical experience in learning these creative skills.

Music Recording & Audio Production: CORE Program - 5 weeks (196 hours)

The CORE Program is the foundation for all The RecW students. It is highly immersive (5 days per week, over 7 hours per day), and sessions are offered year-round with start dates every 7 weeks. Each day is a combination of two lectures and 3-6 hours of project work in the studio. The training is extremely hands-on and creative. Successful completion of program results in Certificate of Completion.

Music Recording & Audio Production: ADVANCED Program - 2 weeks (80 hours)

The ADVANCED Program is an optional extension to the CORE training that allows students to deepen their studio skills. The ADVANCED projects put increased demands on the students' shoulders as they handle all aspects of session work. The RecW's ADVANCED Program is offered 7 times per year, and is usually taken in sequence right after the CORE Program. Successful completion of program results in Certificate of Completion.

- In less than two months, The RecW students get more studio experience than students attending other schools that are much longer and much more expensive.
- Our programs start from square one, yet for students with background, our training is challenging and beneficial.
- The RecW is a very efficient way to fill in gaps for the professional who is self-taught.
- Convenient, low-cost housing is available on campus within a short walk of all classes.





Music Recording & Audio Production CORE Program • 5 weeks (196 Hours)

Students in The RecW's CORE Program build a strong foundation of skills and knowledge in music recording and audio production.

It is five weeks of concentrated training that emphasizes hands-on experience.

The curriculum is a combination of daily studio activities and lectures.

In the studio, students build their creative skills through numerous music and audio projects. After a week of prep on gear operation, students progress to recording and mixing sessions. Sound-for-picture, editing, production and mastering projects are other parts of the hands-on studio experience.

The lectures in the first few weeks directly prep students for their studio activities. In the later weeks, lectures explore broader areas of audio production, live event production and music industry topics. This expansion gives students more insight into shaping future career goals.

Prep Sessions

During the first week, students learn the fundamental operation of analog consoles and Pro Tools systems. Signal flow is emphasized so students gain a deeper understanding that will help them quickly adapt to other gear and software they'll encounter.

Equalization, compression, limiting, delay and reverb are other important topics for the first week. Students ramp up their initial signal processing skills in the DAW lab.

Microphone selection and placement are other fundamental skills. Students practice setting up for drums, amps, vocals, piano and other acoustic instruments. Getting the headphones set up is part of these prep sessions too.

Recording Sessions

The bands and artists start rolling in during the second week of the CORE Program. Students apply the skills they learned in the prep sessions, handling all the hands-on duties of console and Pro Tools operation. RecW instructors guide the workflow of the first few sessions, making sure that students also learn broader responsibilities that go beyond knobs, buttons and faders.

Successful recording also depends very much on dealing with creative personalities and practicing smart and reactive workflow. Session management is gradually put on the shoulders of students as they gain more experience.

Production

Music production skills have greatly expanded as digital technology has provided new options. A song's arrangement, tuning, timing and tempo used to be basically locked-in after recording. Now all of these qualities can be endlessly changed to the point that production can be a method of song creation unto itself.

Mixing Sessions

Mixing is an art form that has few rules and many approaches. Prep mixing sessions take place in the second week where RecW instructors demonstrate a variety of approaches that are used by successful mix engineers. Being able to blend dozens of tracks with clarity and spectral balance is held up as the typical goal of a good mix.

Mastering

CORE students learn to prepare finished mixes for various distribution paths such as CD or vinyl, mono or stereo broadcast, or compressed web content.



Sound-for-Picture Projects

Many RecW grads pursue career paths in audio production for movies, television, gaming, advertising, and corporate presentation.

CORE students learn to record and mix narration, dialogue and Foley performances. Music beds and sound effects are additional audio elements that students learn to synchronize to visual images.

Room Tuning

The interaction of audio monitors with room dimensions, surface treatments and corrective signal processing is measured and optimized using reference microphones and analysis software.

Student Projects

In addition to outside bands coming in, students form their own bands. During the first two weeks, students have access to a rehearsal room where they work out original song ideas or practice song covers.

Soldering & Cable Repair

Fixing cables is the most common repair task that RecW grads might need to do for their own purposes, or as a job duty for an employer.

Skill Testing and Mix Critiques

During the last few days of the CORE Program, students take part in studio activities where they demonstrate the hands-on skills they've learned.

Lecture Topics

Equipment Design & Operation
Control Room Signal Flow
Analog/Digital Conversion
Analog/Digital Signal Processing
Equalization and Filtering
Compression, Limiting, & Expansion
Reverb and Delay
Pitch Correction and Audio Effects
Microphones and Direct Boxes
Crossovers, Speakers and Amplifiers

Studio Techniques & Production
Sound & Hearing
Recording Session Workflow
Recording Instruments and Vocals
Mixing Session Workflow
Producing an Album Project
Live Sound Mixing and Monitoring
Sound-for-Picture Workflow
Recording Voice Talent and Dialog
Recording Foley Work
Mixing Sound-for-Picture
Video Capture and Editing
Camera Blocking, Framing & Lighting
Live Streaming a Live Concert

More for the Well-Rounded Audio Professional
Mastering and CD Duplication
Restoration and Forensic Audio
Project Studio Acoustic Design
Recording Studio System Design
Recording Studio Business Practices
Live Sound for Clubs/Small Venues
Live and Location Recording
Music Business Overview
Independent Label Operation
Copyright, Music Publishing, and Licensing
Artist Development and Management
Career Launch and Job Search

Music Recording & Audio Production ADVANCED Program • 2 weeks (80 Hours)

The ADVANCED Program enhances the experience of CORE Program grads. With a strong foundation in place, the finer points of production can be more deeply exercised in ADVANCED session work.

Students become faster and smoother in hardware and software operation. They gain increased confidence to tackle bigger projects. They gain more abilities in the role of music producer. The ADVANCED experience is an effective bridge between the working in an academic setting and the demands of the "real world".

For students who want to build and operate their own studios, the ADVANCED curriculum includes studio acoustics, DAW system design and setup. The program also teaches how to locate common points of failure in a recording system and how to fix - skills that can save the day when things crash and burn.

The ADVANCED Program is offered right after the CORE Program. Each day includes extensive studio experience along with lecture activity.

Advanced Recording Sessions

ADVANCED students work with our most select bands. The sessions run

longer than in the CORE Program, and teams see song projects through from start to finish. The teaching style is different too. Our instructors sometimes refrain from talking in technical terms, and instead approach the sessions like a non-engineering producer. This emulates the real-world scenario where engineers have to interpret the desires of a non-technical creative partner. For some session work, students take the lead on all production decisions, with the instructor stepping in only if there's a major problem.

Advanced Production

After tracks are recorded, but before final mixing, there are crucial production steps that can make a huge difference. Some are simply a "clean-up" of the tracks that make the downstream workflow easier to manage and pass along. Other pre-mixing production processes can be far more radical - taking those recorded tracks and twisting them into alternate versions that can give a song its defining signature.

Advanced Mixing Sessions

Having raised the bar during recording and applying any subsequent production processing, the tracks are tighter and more polished for mixing. For some of



these mixing sessions, our instructors steer the process in the role of heavily involved producer. And for other mixes, instructors pull back to give students all the responsibility for outcome.

Advanced Mastering

Students deepen their skill in preparing mixed material for delivery to various distribution paths such as CD or vinyl, mono or stereo broadcast, or compressed web content. iZotope's Ozone software is the primary tool used for these studio activities.

Advanced Sound-for-Picture Project

These classes build upon the project experience of the CORE Program. The ADVANCED sound-for-picture project is much more complex and involves many more sound elements needed for an extended movie scene. Mixing the audio in 5.1 surround is another distinction of this advanced project.

Advanced Student Music Project

In the CORE Program, student music projects lean towards a "band" approach to song creation. In the ADVANCED Program, student music projects utilize more MIDI production technologies that can supplement the "band" approach.

System Troubleshooting

Failure points are created in audio systems for students to find and fix. Coached to use logical flowcharts and the process of elimination, students get more skilled and faster at uncovering these problems.


Mastering

CORE students learn to prepare finished mixes for various distribution paths such as CD or vinyl, mono or stereo broadcast, or compressed web content.

Lecture Topics

Dolby Atmos™ Mixing
Advanced Post Production
Electronic Composition
Studio Design - Hardware
Studio Design - Acoustics
Hardware Troubleshooting
Computers for Audio
System Install and Setup
Hardware Troubleshooting
PA System Design & Tuning





Campus & Studios



The RecW's campus is a big factor in what makes attending its programs a special experience.

Great studios combined with close and affordable student housing maximizes the learning time per day. It's also just an excellent place to be - immersed 24/7 within a musically creative community.

The studios are designed and equipped to prepare RecW students for music production as it is practiced in successful facilities worldwide.

Studio A

Analog still rules in The RecW's Studio A. An Amek Big large format console is the centerpiece of production. Students learn classic "old school" signal flow and the beauty of having onboard EQ for recording.

The analog realm extends to the outboard gear, with select mic preamps, EQ's, compressors and limiters ready to be patched in. To

complete the analog picture, an MCI JH-24 2" 24-track tape machine is also available when the right project comes along wanting this vintage option.

Along with all this analog goodness, a Pro Tools system is a vital part of Studio A's creative toolkit. This analog/digital hybrid approach is extremely popular for major label music production.

Studio architect John Storky designed Studio A's control and live rooms. His approach to acoustics has made him world-renown. Getting drum sounds in the live room is an excellent learning experience for The RecW students. Miking a Yamaha grand piano is another essential part of the training in Studio A. The mic closet is well-stocked for all of the different recording challenges encountered by The RecW students.

Studio B

The RecW Studio B: A key purpose of this room is to take projects recorded in Studios A and C and do additional production work and final mixing.

Logic Pro is another DAW found in Studio B, and The RecW students have additional production and mixing projects they tackle using this software.

Studio C

Cutting-edge digital technology is the theme of The RecW's Studio C.

A Slate Pro Audio Raven MTi multitouch production console takes the center spot of operation. Touch screens are coming on strong, and the Raven product line is the leader at this stage of the game.

Universal Audio's Apollo is part of the digital signal flow with their Unison mic preamps and amazing DSP powered plugins. Their emulations of vintage analog gear is widely considered as the best in the business. Additional mic preamps available in Studio C include choices from Focusrite, Rupert Neve Designs and SSL.

Pro Tools is the primary DAW being used for recording and mixing in Studio C. In addition to the numerous stock plugins that come with Pro Tools, there are special-purpose plugins such as Antares Auto-Tune and iZotope RX.

Studio D

Live Sound is the theme here, we teach the students about live signal flow, elimination of feedback, monitor mixing, managing wireless systems, console scene creation, and tablet mixing.

We also have a preparation class to assemble Front Of House, Stage Monitors, Lighting Truss and Fixtures, connecting power distribution, and running a 5 camera video mix and stream it live to YouTube.

At Chillicothe's own historic **Majestic Theater** all of the prep classes culminate to a pair of live concerts in our final week of classes.

Studio E

Studio E is The RecW's highly-specialized room for creating Sound-for-Picture projects.

The control room has 5.1 audio monitoring, as well as a large central LED panel for viewing the visual content. The live room includes a foley pit that gives The RecW students recording experience in this area of audio post-production.

DAW Lab

The RecW has a 6-station DAW Lab that allows CORE and ADVANCED students to extend their hands-on training to shorter and more focused "one-day" projects and learning exercises.



These stations have virtually all the same software found in Studios A through D. Pro Tools HD, Logic Pro X, iZotope Ozone 7 and RX 5, Antares Auto-Tune, Slate Trigger... this extensive complement of software makes the DAW Lab a powerful place for students to sharpen their production skills.

Student Housing

The RecW offers affordable student housing that is within a very short walk to all of our studios.

Options include modern cabins shared by 4 to 6 students, and dorm-style houses with single or double room assignments. All are air-conditioned and have kitchen/bath facilities. Cookware and utensils are provided, but students are responsible for their own meal preparation, housekeeping, and bed linens.

A convenience store and laundry facilities are within easy walking distance.

Free Wi-Fi is available throughout The RecW campus.

**Do you want to visit
The RecW?**

**Just give us a call at:
740-835-4455**

Questions & Answers

Is The RecW training only offered in Ohio?

The educational experience we offer is exclusive to one location. Our private campus is a creative retreat that has earned a world-wide reputation in the music recording industry. Students from every state in the U.S. and more than 70 other countries have made the journey to The RecW. We are worth the trip.

Does The RecW offer job placement assistance?

We help our students pursue employment in several ways. While they attend, students learn about hiring practices and methods of approaching that first job. And The RecW provides quick response to reference requests for graduates being interviewed. Our placement assistance also includes a network of facilities that have historically used us for their hiring needs. This is a resource that expands as our alumni become business owners themselves.



What is the background of most students?

The student community at The RecW is as fascinating as the training we offer. The average age is around 21 years old, with most students being between 19 and 27. There are always a few students in their 30s and 40s too, and the 50+ crowd is often here to show the younger ones how to keep it rocking. About 90% of the student population is male, and about 5% is from outside the United States. About half of the class has a fair amount of prior experience in recording or live sound.

Do I have to be a musician?

Having some basic playing skills is helpful, but not required. You should have a deep appreciation for music, and a willingness to explore all styles. About 2/3 of our students play an instrument, sing, or write songs. All students will be involved in recording/mixing student projects, but performing is voluntary.



Do I need a background in computers or electronics?

It is expected that you will have basic computer skills on either Mac or Windows operating systems. Right from the start of classes, you will need to be already familiar with basic concepts like mouse/keyboard usage and file/folder management. However, having a background in electronics is not required to take our programs. We will introduce some electronics design concepts as part of your classes, but as long as you can handle some basic arithmetic, you'll be fine.



What's the daily schedule like?

A typical day of the CORE Program will average around 8 hours of scheduled activities: 2 lectures at 120 minutes each, and 2 or 3 studio classes at 120 minutes each. Classes start as early as 9:00 am and can sometimes run until midnight on days when you're scheduled for tracking sessions. In between classes, students will have reading assignments and may also sign up for rehearsal time to work on student projects.



What are the campus housing options?

We offer several affordable on-campus housing options, all within a one minute walk of classes. Choices include dormitory-style housing with single/double room assignments, and single cabins that are private for individual students, all with bath and kitchen facilities. Cookware and utensils are provided, but students are responsible for their own meal preparation, housekeeping, and bed linens. Free Wi-Fi is available throughout campus, and there is also on-campus laundry facilities.

What about transportation? Do I need a car?

Having a car is convenient, but not needed by students who live on campus. A convenience store is within a short walk of student housing, and students frequently carpool for more shopping choices in Chillicothe after getting to know one another. At the start and end of each program, we provide students with free

shuttle service to the Columbus airport and Greyhound bus station.

What will I have when I finish my training?

Students who satisfy all program requirements will be issued RecW certification. You will also have a portfolio of your recording, mixing, and other media production projects. Text materials, handouts, and a carefully constructed Performance Evaluation are also received. Most importantly, you will have new friends, professional associates, and greatly expanded creative skills and knowledge.

What is The RecW campus like?

Our campus is nestled on a wooded hillside about 7 miles south of Chillicothe, Ohio (pop. 25,000). The setting is laid back, but this is a good counterbalance to the very active schedule of session work that students have. Our studios and administration offices are



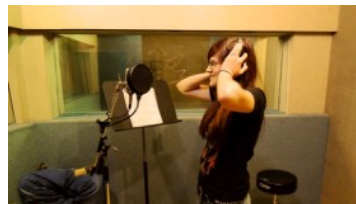
held in one main building, and 12 housing units and support facilities are also found on school grounds.

Can I visit The RecW?

Certainly! We understand your need to check us out and we are happy to have you visit. We accommodate visitors on weekdays with scheduled tours at either 11:00am or 2:30pm. If you would like to visit, please call us a few days before you plan to come (800-848-9900).

How can I use this training?

RecW grads are prepared for a variety of entry points into pro audio. The traditional example would be starting out as an assistant at a music recording studio. But grads are also found at studios that specialize in television and film, commercial advertising, corporate



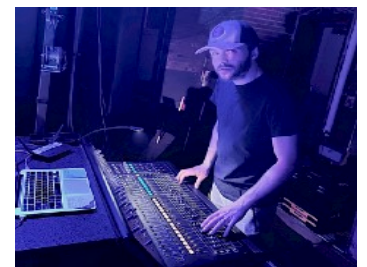
presentation, game software development and more. Another career path is live sound. Our graduates are behind the boards at clubs, concert halls, churches, theaters, and theme parks across the country.



Many RecW students pursue self-employment as their immediate plan after graduation. Newer, more affordable technologies make being your own boss much more possible than in the past. And instead of recording or producing others, many RecW students take our training solely for the purpose of working on their own music and to make sure that their music sounds the best it can when performed Live!

What's the earning potential of an audio professional?

Although a few audio professionals make tremendous amounts of money, earning a middle-class income is much more typical. In general, working for a studio that leans towards commercial and corporate work offers a more balanced earning potential than a purely music environment. And of course, money made the first few years usually starts modestly, and increases with career growth in responsibility and position. Beyond the rewards of money, audio professionals can enjoy great personal satisfaction in the creative work that they do.



Where can I look for work?

Historically, a higher concentration of studios doing major label music projects was found in New York, Los Angeles and Nashville. This is still somewhat the case. However new technologies are letting high quality production be done without the big gear investment, so there is a dramatic spreading out of where creative types can live and collaborate. And there are many other cities to choose when you consider the many types of production facilities and entertainment venues that exist. If you keep your options flexible, you can live just about anywhere you want.

Cost & Registration

CORE Program

5 weeks - 196 hours
Tuition \$3995

2025 CORE Schedule

- Winter (Jan 6 - Feb 7)
- Early Spring (Feb 24 - Mar 28)
- Late Spring (Apr 14 - May 16)
- Early Summer (Jun 2 - Jul 4)
- Late Summer (Jul 21 - Aug 22)
- Early Fall (Sep 15 - Oct 17)
- Late Fall (Nov 3 - Dec 5)

ADVANCED Program

2 weeks - 80 hours
Tuition \$1995

2025 ADVANCED Schedule

- Winter (Feb 10 - Feb 19)
- Early Spring (Mar 31 - Apr 9)
- Late Spring (May 19 - May 28)
- Early Summer (Jul 7 - Jul 16)
- Late Summer (Aug 25 - Sep 3)
- Early Fall (Oct 20 - Oct 29)
- Late Fall (Dec 8 - Dec 17)

Materials Fees

Each program has a Materials Fee to cover items such as books, handouts, and project supplies. The fee is \$135 for the CORE Program and \$25 for the ADVANCED Program.

Student Housing Costs

We offer housing that is within a very short walk to our studios. Options include modern cabins shared by 4 to 6 students, and dorm-style houses with single/double room assignments. All are air-conditioned and have kitchen/bath facilities. Cookware and utensils are provided, but students are responsible for their own meal preparation, housekeeping, and bed linens. A convenience store and laundry facilities are within easy walking distance. Free Wi-Fi is available throughout The RecW.

Dorm Double - \$110/week (2 per rm.)
Dorm Single - \$150/week (private rm.)
Single Cabin - \$200/week

CORE Program Registration Procedures

The first step to register for the CORE Program is to submit a Registration Form. This form is available on our website and a paper version can be provided by request.

After we receive your Registration Form, our Registrar's office will review it then send you an email to confirm enrollment details.

When this confirmation is complete, to hold your seat in a specific CORE session, you'll need to pay \$315 to lock in your enrollment. This breaks down into the \$135 administration fee, and a \$200 deposit credited towards your tuition. Should you decide later not to attend, you will be refunded the \$200 tuition deposit.

Several weeks before your CORE session begins, you'll get more emails to help prep you attendance at The RecW - details on travel arrangements, timing of arrival, what to bring or not bring. Our Registrar's office will guide you in for a great learning experience. Your invoicing for tuition and housing balances due will also be sent at this time.

Admission Requirements

The RecW students must be at least 18 years old at the start of classes. Exceptions may be made for students that are 17. In these cases, Registration Forms must be signed by parent or legal guardian and high-school transcripts must be submitted.

High-school graduate reading and basic math skills are necessary, and classroom participation requires conversational English.

The RecW maintains strict maximum class sizes. Admission is subject to available space and will be filled on a first-come, first-served basis.

ADVANCED Program Registration Procedures

To help students decide about taking the optional ADVANCED Program, we typically hold off on registration until students have had two weeks of training in the CORE Program. This gives them the opportunity to experience the high quality of our teaching methods before making any further commitments.

Registration for the optional ADVANCED Program formally takes place at the end of the second week of CORE classes. Acceptance is subject to available space, sign-up order, and performance in the CORE Program.

Performance Requirements

Through quizzes and testing, students are given feedback of their performance several times during their training. An overall final evaluation score is calculated based on a combination of written test scores, skill test scores, and subjective observations of studio performance. A student's final evaluation cannot be below a final score of 70% to receive The RecW certification. This final evaluation is compiled and mailed with certification approximately two weeks after the end of the session.

Student Conduct

Students are expected to conduct themselves as a good member of The RecW community. The RecW reserves the right to terminate the enrollment of any student guilty of disruptive behavior or destruction of The RecW property. Any refunds in such a situation will be determined in accordance with school policy concerning voluntary withdrawal.

Withdrawal and Tuition Refund

Tuition and all other payments are 100% refundable up to the start of classes. Students who withdraw after partially completing their training are refunded their tuition in accordance with Ohio State Board of Career Colleges and Schools refund policy:

- A student who starts class and withdraws before the academic term is 15% completed will be obligated for 25% of the tuition and refundable fees for the current academic term plus the registration fee.
- A student who starts class and withdraws after the academic term is 15% complete but before the academic term is 25% completed will be obligated for 50% of the tuition and refundable fees for the current academic term plus the registration fee.
- A student who starts class and withdraws after the academic term is 25% complete but before the academic term is 40% completed will be obligated for 75% of the tuition and refundable fees for the current academic term plus the registration fee.
- A student who starts class and withdraws after the academic term is 40% complete will not be entitled to a refund of the tuition and fees for the current academic term.

Subject to administrative approval, students who must withdraw from classes due to personal illness or emergency circumstances may return at a future session at The RecW to complete their training with no additional tuition charge.

Update Policy

To allow for the continual improvement of its training programs, The RecW reserves the right to update curriculum and studio content as described without notice. This same right is reserved to modify procedures and policies for the betterment of The RecW systems and the student experience. All of The RecW policies will be created in accordance to the rules as established by the Ohio State Board of Career Colleges and Schools, 30 E. Broad Street, Suite 2481, Columbus, OH 43215. Phone 877-275-4219.





Music and Event Production CORE Program Registration

Student Information

First (given)	Middle	Last	Birthdate
Name (preferred)	Age	Sex	Mobile Phone
Preferred Pronouns:			
Street		Home Phone	
City	State	Best Email	
Country	Zip	Alt Email (if available)	
How does music play a part in your life? Do you play an instrument and/or write songs?			
Please list your favorite bands, artists and styles of music.			
Please summarize your education and work history.			
How did you learn about The RecW?			

Transportation & Housing Information

Will you need to be picked up at Columbus airport (Y / N)?	Will you have a car while attending (Y / N)?	If yes, what is your car license #?
Please Indicate: <input type="checkbox"/> I plan to stay in The RecW housing <input type="checkbox"/> I plan to arrange my own housing		
Is there another student with whom you plan to room (Y / N)?	If yes, who is your requested roommate?	
Please rank your preference of Housing options [first choice = 1... second choice = 2... third choice = 3]		
<input type="checkbox"/> Double (\$110/week) Dorm-style housing 2 people / bedroom	<input type="checkbox"/> Single (\$150/week) Dorm-style housing 1 person / bedroom	<input type="checkbox"/> Private Cabin (\$200/week) 1 person / 1 Cabin *Limited Availability



Music and Event Production CORE Program Registration (Continued)

Enrollment Agreement

I wish to enroll in The RecW CORE program in accordance to the terms and conditions stated in this enrollment agreement.

Program Name: Music Recording & Audio Production CORE Program.

Program Length: 196 hours, completed over 5 weeks. Classes are typically held Monday through Friday. Weekend classes may be held in the event of holidays, or required makeup.

Tuition and Fees: \$4245 is the total program cost (\$3995 Tuition + \$135 materials fee + \$115 Admissions fee). This cost is not subject to any increase after enrollment acceptance for a specific session, or during the period of attendance.

Payment: All tuition and materials fees are due before the start of classes. All payments are 100% transferable to another program session before the first day of any program.

Cancellation: This agreement becomes effective upon acceptance by The RecW. The student retains the right to cancel this agreement by providing written notice within five calendar days for full refund. After this period the administration fee will be retained and the balance remains refundable.

State of Ohio refund policy:

- A student who starts class and withdraws before the academic term is 15% completed will be obligated for 25% of the tuition and refundable fees for the current academic term plus the registration fee.
- A student who starts class and withdraws after the academic term is 15% complete but before the academic term is 25% completed will be obligated for 50% of the tuition and refundable fees for the current academic term plus the registration fee.
- A student who starts class and withdraws after the academic term is 25% complete but before the academic term is 40% completed will be obligated for 75% of the tuition and refundable fees for the current academic term plus the registration fee.
- A student who starts class and withdraws after the academic term is 40% complete will not be entitled to a refund of the tuition and fees for the current academic term.

My desired Session of the Music Recording & Audio Production CORE Program is selected below:

- Winter 2025 (Jan 6 - Feb 7)**
- Early Spring 2025 (Feb 24 - Mar 28)**
- Late Spring 2025 (Apr 14 - May-16)**
- Early Summer 2025 (June 2 - Jul 4)**
- Late Summer 2025 (Jul 21 - Aug 22)**
- Early Fall 2025 (Sep 15 - Oct 17)**
- Late Fall 2025 (Nov 3 - Dec 5)**

For those students who choose to stay in The RecW Housing, rental rates range from \$110 to \$200 per week. All tuition payments, housing, and miscellaneous fees must be paid in full before the start of classes.

All payments are 100% transferrable to attend another session up until the start of classes. All payments are fully refundable, minus the administration fee, up to the start of classes, provided notification is given to Registrar's Office by 11am the first day of classes.

Students who withdraw from classes due to personal illness or emergency may, with administrative approval, return at a future session to complete their training with no additional tuition charge.

Students must obey all local and state laws and are expected to conduct themselves in a respectful manner. The RecW reserves the right to terminate the enrollment of any student guilty of disruptive behavior or willful destruction of The RecW property. Students are required to speak and read English at a high-school level and perform basic arithmetic.

Students with special needs that could prevent the use of this training for successful workplace performance must discuss this condition with the Director's office prior to enrollment.

Graduates of this program receive The RecW CORE Program Certificate. If a student misses more than 20% of scheduled class hours, or if their final evaluation is less than 70%, this Certification will not be awarded. Recent graduation rates for this program are 94% (2024) 98% (2023), 97% (2022)

The employability of a graduate depends on a variety of factors. The RecW does not guarantee employment. Job placement assistance will favor those graduates with higher performance evaluations. Recent placement rates for this program are 89% (2024), 76% (2023), 82% (2022). These rates include graduates securing employment with or without school assistance and exclude graduates unavailable for placement.

In addition to directing complaints to The RecW offices, students may direct such concerns to the State Board of Career College and Schools, 30 East Broad St, Suite 2481, Columbus, OH, 877-275-4219. Registration #: 80-07-0696T.

This agreement becomes effective upon acceptance by The RecW. The student retains the right to cancel this agreement within five days of The RecW acceptance signing.

I have read The RecW Catalog Information Materials and this Enrollment Agreement. I agree to abide by the terms and policies as described in these documents.

Student Signature X _____ **Date** _____

The RecW Registrar X _____ **Date** _____

Staff and Guest Lecturers

Paul Pollard - President/Owner

Paul is a specialist in music business topics. Paul operates several businesses including a record label, music publishing and a production company. For over 17 years, Paul has passionately shared his entrepreneurial skills and unique industry perspective with our students.

In 2020 Paul took on the honor of managing The RecW, and a campus wide revival got underway.

Aaron Seagraves - Director

Aaron spent 6 years here instructing before leaving to pursue other business management opportunities. Leading teams of people for large companies would turn out to be an asset to us. Returning in 2020 as Operations Manager, Aaron was tapped in 2024 to take on the directorship of the school. A strong passion for mentorship is a perfect fit for our training of the next generation of Audio Professionals.

Jeff Ling - Chief Engineer / Instructor

Jeff was the prototypical teenage tech guru who found his first engineering employment with CBS Records in 1978, then Indiana State University in 1979. Joining The RecW in 1980, he is our champion lecture giver and an expert authority on a vast range of music recording technologies. Jeff's own music compositions are a favorite of The RecW students

John Truman - Senior Engineer / Instructor

While stationed in Europe, *[Communications / Electronics Training, US Army '86-95]* John kept busy singing, recording and mixing live for his band, kept Army communications gear working during The Cold War, Desert Storm, and Southern Watch.

Joined The RecW in 1995, he is a staff specialist on topics regarding equipment installation, operations and maintenance.

Chloe Burson, Engineer / Instructor

Chloe has expanded her knowledge by working in the world of live sound. This experience allows her to help students with real-world knowledge and problem-solving skills. Since joining The RecW in 2022, Chloe's passion, knowledge, and hands-on approach help her to inspire and equip our students for the world of audio production.



Cody Wiggins, Engineer / Instructor

Cody's background in theatrical, lighting, and video systems technology brings multiple skillsets to the staff. Since joining the team in 2022, His extensive live event experience allows sharing real world knowledge with the students of The RecW.

Anthony Banks, Engineer / Guest Lecturer

Anthony has an Associates of Arts in Communications, Graduated with Honors from both of The RecW's CORE and Advanced courses. Completed songwriting retreat in TN with multi-platinum Grammy nominated Andrea Stople. Started his career of music as an artist then a producer, then as an A1 for live events. He does everything from the songwriting process in the studio, to the live mixing. Record Producer, Artist, Songwriter, Studio Engineer. Super passionate explosive creative in the studio.



Music and Event Production Advanced Program

2 weeks, 80 hours of training

Studio Classes - 64 hours

Lecture Classes - 16 hours

The RecW's ADVANCED Program enhances the experience of the CORE Program graduate. With a strong foundation already in place, the finer points of production can be deeply explored in the ADVANCED sessions.

Students become faster and smoother in hardware/software operation. They gain increased confidence and an assertiveness to tackle bigger projects. And they gain more abilities in the role of music producer and with the responsibilities that go along with this creative title. The ADVANCED experience is an effective bridge between the working in an academic setting and the demands of the "real world".

For students who want to build and operate their own project studios, the ADVANCED curriculum includes studio acoustics, DAW system design and setup. The program also teaches how to locate common points of failure in a system and how to fix these problems – skills that can save the day if things crash and burn.

The ADVANCED Program is offered right after the CORE Program. Each day includes several hands-on studio projects and/or session work, along with knowledge-building lectures.

All by itself, the CORE Program provides excellent prep for a career in audio production.

However, The RecW offers the ADVANCED Program to enhance specific skills and knowledge.

Students can enter the industry with increased abilities and experience.

ADVANCED Studio Classes

In the ADVANCED Program, students work with our most select bands... those with the best players and songwriting skills. The sessions run longer than in the CORE Program, and teams see song projects through from start to finish. The teaching style is different too. Our instructors sometimes refrain from talking in technical terms, and instead approach the sessions like a non-engineering producer. This emulates the real-world scenario where engineers have to interpret the sonic desires of a non-technical creative partner. And for other session work, students take the lead on all production decisions, with the instructor stepping in only if there's a major problem. This shifting teaching style lets students exercise different workflow responsibilities as the situation demands.



Continued other side →

ADVANCED Studio Classes - *continued...*

ADVANCED Production – After tracks are recorded, but before final mixing, there are crucial production steps that can make a huge difference. Some are simply a “clean-up” of the tracks that make the downstream workflow easier to manage and pass along. Other pre-mixing production processes can be far more radical - taking those recorded tracks and twisting them into alternate versions that can give a song its defining signature.



ADVANCED Mixing Sessions – Having raised the bar during recording and applying any subsequent production processing, the tracks are tighter and more polished for mixing. For some of these mixing sessions, our instructors steer the process in the role of heavily involved producer. And for other mixes, instructors pull back to give students all the responsibility for outcome. Again, this shifting teaching style has an important educational purpose.

ADVANCED Mastering – Building on top of the experience in the CORE Program, ADVANCED students deepen their skill in preparing mixed material for delivery to various distribution paths. iZotope’s Ozone

software is the primary tool used for these studio activities.

ADVANCED Sound-for-Picture Project – These classes build upon the project experience of the CORE Program. The ADVANCED sound-for-picture project is more complex and involves many more sound elements needed for an extended movie scene. Mixing the audio in 5.1 surround is another distinction of this advanced project.

ADVANCED Live Events! In the CORE Program, our live events focused on the “how and why”. In the ADVANCED Program, our events add to that experience to build confidence in your event production skillset. Working FAST is the name of the game.

System Install/Setup – Students gain experience in proper system hookup and cable management. Once it’s all connected, there are initial settings of hardware and software needed to get it all operating smoothly.



System Troubleshooting – Failure points are created in audio systems for students to find and fix. Coached to use logical flowcharts and the process of elimination, students get more skilled and faster at uncovering these problems.

ADVANCED Student Project - Your instructor acts as producer to bring your project to life, as students are placed in the studio with zero prep time and come out the other side with a finished project

ADVANCED Lecture Topics

Lecture Topics

- Dolby Atmos™ Mixing
- Advanced Post Production
- Electronic Composition
- Studio Design - Hardware
- Studio Design - Acoustics
- Hardware Troubleshooting
- Computers for Audio
- System Install and Setup
- Hardware Troubleshooting
- PA System Design & Tuning

ADVANCED Program Details: for 2025

Tuition: \$1995

Materials: \$25

Housing: SAME AS CORE RATE

Registration Opens: Monday, of 4th week Core, 11 am
(Minimum \$200 down payment required)

Finalize Date: Monday of 5th week Core (Payment Balance Due)



Music and Event Production Advanced Program

ADVANCED Program Session:	Start/End Date:
Name	Birthdate
Address	Mobile Phone
City/State/Zip	Email

- Classes are typically held Monday through Friday, with the exception of off days for holidays and field trips. Occasional weekend classes may be held in the event of holidays, guest speakers, or makeup classes. Clock hours total 80.
- Tuition for the Advanced Program is \$1995. Material Fees are \$25. These fees are not subject to any increase during the period of scheduled attendance.
- For those students who choose to stay in Recording Workshop Housing, rental rates range from \$80 to \$200 per week. All tuition payments, housing, and miscellaneous fees must be paid in full before the start of classes.
- All payments are 100% transferrable to attend another session up until the start of classes. All payments are fully refundable, minus the administration fee, up to the start of classes, provided notification is given to Registrar's Office by 11am the first day of classes.
- State of Ohio refund policy:**
 - A student who starts class and withdraws before the academic term is 15% completed will be obligated for 25% of the tuition and refundable fees for the current academic term plus the registration fee.
 - A student who starts class and withdraws after the academic term is 15% complete but before the academic term is 25% completed will be obligated for 50% of the tuition and refundable fees for the current academic term plus the registration fee.
 - A student who starts class and withdraws after the academic term is 25% complete but before the academic term is 40% completed will be obligated for 75% of the tuition and refundable fees for the current academic term plus the registration fee.
 - A student who starts class and withdraws after the academic term is 40% complete will not be entitled to a refund of the tuition and fees for the current academic term.
- Students who withdraw from classes due to personal illness or emergency may, with administrative approval, return at a future session to complete their training with no additional tuition charge.**
- Students must obey all local and state laws and are expected to conduct themselves in a respectful manner. Recording Workshop reserves the right to terminate the enrollment of any student guilty of disruptive behavior or willful destruction of Recording Workshop property.
- Students are required to speak and read English at a high-school level and perform basic arithmetic. Students with a handicap that could prevent the use of this training for successful workplace performance, must discuss this condition with the Director's office prior to enrollment.
- Graduates of this program receive Recording Workshop ADVANCED Program Certification. If a student misses more than 20% of scheduled class hours, or if their final evaluation is less than 70%, this Certification will not be awarded. Recent graduation rates for this program are 100.0% (2024), 100.0% (2023), 100.0% (2022).
- The employability of a graduate depends on a variety of factors, many which are inherent in the graduate and beyond the scope of this training. Recording Workshop does not guarantee employment. Job placement assistance will favor those graduates with higher performance evaluations. Recent placement rate for this program are 83.0% (2024), 74.0% (2023), 88.0% (2022). These rates include graduates securing employment with or without school assistance and exclude graduates unavailable for placement.
- In addition to directing complaints to TheRecW offices, students may direct such concerns to the State Board of Career College and Schools, 30 East Broad St, Suite 2481, Columbus, OH, 877-275-4219. Registration #: 80-07-0696T.
- This agreement becomes effective upon acceptance by TheRecW. The student retains the right to cancel this agreement within five days of acceptance signing.

I have thoroughly read TheRecW information materials and this Enrollment Agreement. I agree to abide by the terms and policies as described in these documents.

Student Signature **X** _____ Date _____

TheRecW Registrar **X** _____ Date _____

Payment Enclosed: (All payments are refundable as described in refund policy)

_____ \$200 Seat Reservation (\$1795 Balance) _____ \$1995 Full Tuition

Method of Payment

Check (Make checks payable to: The RecW LLC)

Credit Card (Visa, MasterCard, Discover)

If paying by Credit Card	Account #	Expiration	V-Code
Card Holder Name		Card Holder Signature X	
Card Holder Address			